

# ANOTHER FINE MESSE

JONATHAN MORRISH, ASSOCIATE DIRECTOR AT LAPD CONSULTANTS, GIVES A LIGHTING DESIGNER'S VIEW OF THE MONSTER THAT IS LIGHT + BUILDING



*Left: the DayWave from Philips  
Right: the Orbiter 2 from Siteco*



I am still amazed by the scale of Light + Building. With its ten halls, eight of which show a vast range of lighting product, including architectural, decorative, and associated technologies, it's a feast for the professional lighting designer.

And I must say that Messe Frankfurt has it really well organised.

On arrival at Frankfurt airport there were buses to take the LAPD contingent direct to the Fair and plenty of accommodation nearby. The successful organisation is reflected in the visitor numbers. According to the organisers statistics more than 165,000 visitors attended the six day exhibition in 2008. This compares to 135,000 in 2006 – a leap of 22%. Architects, lighting designers and engineers were well represented and approximately 66,000 international trade visitors made their way to Frankfurt. The exhibition is huge and it takes

a while to get your head around the sheer size of the place. Luckily plenty of help is at hand. Desks located outside each hall had plenty of information regarding the location of companies and with over 2,000 exhibitors represented you really need this help to navigate.

## TOP STANDS/PRODUCTS

### Philips

I managed to get lost in the world of Philips for a whole morning which completely mucked up my schedule! But I have to say this was worthwhile as information was well presented and the level of expertise impressive with senior personnel, such as Jay Shular, head of marketing and global communications, on hand to give advice. My only criticism was that the hospitality was a bit lame with little in the way of refreshment. (Personally I need a drip feed of coffee to get through three days

at any exhibition and I'm sure this is a pretty common experience.) The fluorescent section was excellent. The T5 'TL5 Xtra' lamps are rated at 30,000 hours when running on any good quality control gear but will run for 40,000 hours (10% failure) when combined with Philips' own Xtreme gear. The TL-D Xtreme lamp will give 77,000 hours (10% failure, 24 hr burning) on any good quality HF control gear. The lamps still manage to produce a colour rendering of Ra 85 in colour 830 and 840 with the Xtreme also available in 865. The HF-P Xtreme gear also runs for 100,000 hours with 10% failure rate.

I particularly liked the DayWave, a curved LED fitting that is designed around the LED light source – a much more imaginative approach than building LEDs into an already existing luminaire. As its name suggests the luminaire is shaped like a wave, some-

thing that could not have been achieved using a linear T5 lamp. It is also controllable and this allows the user to change output and adjust colour temperature, to suit mood and/or time of day.

### Siteco

Siteco has produced a luminaire with a similar design approach – with the LED light source dictating the form of the luminaire. This pole top fitting, the DL10, is designed for road and precinct lighting.

I must admit I hadn't realised how big Siteco is as a company and this was reflected in their extensive product range and the sheer size of the stand. The CL series is well designed with clean lines and forms reduced to their essentials. This was awarded the iF design award by the 'International Forum design'.

The Orbiter 2 combines LEDs with Eldacon technology. The warm

*Below: the LET D pendant from Baltensweiler  
Top Right: Osram's Slimline T5 Feelux system  
Bottom right: RZB's Slopia exterior path lights and bollards*



white direct LEDs and the indirect cool white LEDs can be controlled separately to create different moods and scenes.

#### **Baltensweiler**

The Let D range includes a pendant, floor light and desk light. This is a gem of a product and it was rightly rewarded with a Design Plus award. Its clever design uses a ball and socket joint for the main adjustment. The fitting uses a small, elegant extrusion to house the LED light source.

#### **Osram**

The T5 SEAMLESS fluorescent system allows continuous linear fluorescent lighting without the dark spots common when battens are butted together. It achieves this by mounting the cathode underneath the end of the lamp, so that the end looks similar to the end of a compact fluorescent lamp. There is therefore no need to overlap lamps in pelmet details

and presumably they could also be mounted into linear systems. I must admit I couldn't see why Osram was heralding the new CFLi - the G28d r - as such an innovation. Although on average 21.5mm shorter than the norm it does mean yet another lamp base and there are already so many on the market.

#### **RZB**

The best hospitality award certainly goes to RZB. Paul Thorgood and his staff came to my rescue when I was on my last legs and hadn't eaten all-day with beer and sandwiches a plenty. The products were also good! The Slopia is an excellent exterior path light/bollard with adjustable LED heads of 3.6 watts each. The heads can be directed onto the path or road, giving the fitting a unique look.

#### **Flos**

The Lunar was very impressive – I

would love to use it in a project, but not sure I could get the cost past a client. As the catalogue states: 'The Lunar provides a lighting solution for big architectural spaces'. The concept is inspired by stage lighting with a tubular space frame allowing different lighting elements to be mounted onto it, including audio and video as well.

The other product that stood out was the Fort Knox - predictable, I know to admire a product designed by Philippe Starck, but this one is spot on. An indirect wall mounted luminaire for up lighting or wall washing, it has a lovely die-cast aluminium body which is hand polished and comes in metal halide or linear halogen, with integral control gear.

#### **Martini**

The Shop Line is a well considered continuous linear system, which comes in three models the 156, 59 and 36 (this refers to the

width in mms of the lit element). This can be recessed, surface mounted or suspended. The flashing on the product is very even and the components and installation well thought through.

#### **Alteme**

The AiKU - stairway spot light can be mounted onto a recessed or suspended frame. This is fairly standard, but the clever bit is that the bracket has four positions so the spotlight can be mounted at different heights. The fitting can therefore be fully recessed or sit proud of the track.

#### **Castaldi**

Zen is a new range of LED products. I liked the neat, contemporary design. It creates an effective pattern and coverage of light and has a good level of IP rating

#### **XYLUX**

The XY-EXIT fitting by XYLUX is an excellent emergency product that

looks good as well; then again I would say this as LAPD designed it! But seriously this is a high quality range of exit luminaires that use LEDs to illuminate the sign. This provides cost savings through energy efficiency. The fitting also has built in automatic fully compliant self-testing.

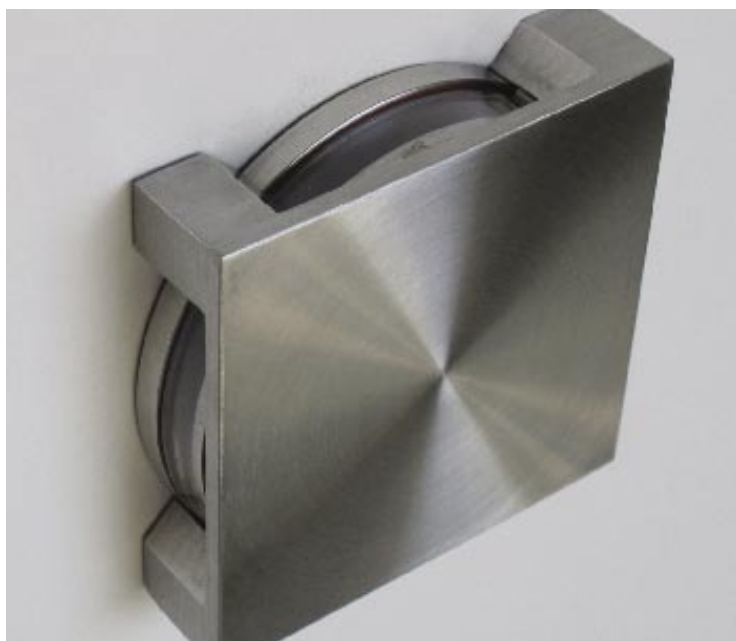
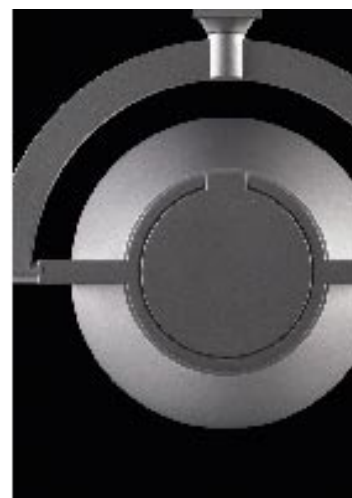
### Seminars

As well as Lights of the Future, an EU-supported competition for energy-saving luminaires, and the Luminale, a festival of lighting, a series of complimentary seminars run alongside the exhibition. I attended the very informative 'The whole truth about modern light sources and energy saving lamps' debate about incandescents versus CFL lamps. Hosted by Paul Traynor, President of the Professional Lighting Designers' Association, this included impressive input by Kevan Shaw and Gad Giladi. The result was a lively debate that highlighted concerns regarding the phasing out of the incandescent lamp. These included the danger to the environment and human health if effective recycling measures are not in place to deal with CFLs and the toxins, such as mercury, they contain. Other arguments put forward included the points that consumer savings and the total energy saved by switching from incandescents to compact fluorescents are smaller than contended and that the visual environment will be adversely affected.

### PLDA

The PLDA celebration of light at the Bockenheimer depot in Frankfurt provided a useful interlude in an interesting historic venue. The great and the good of lighting design attended with a good turnout from LAPD. Paul Traynor looked very dapper as usual and made an excellent introduction. The evening was based around the world of film with Martin Valentine giving a talk about the inspiration he draws from this medium.

[www.lapdconsultants.com](http://www.lapdconsultants.com)



**Top:** the Lunar from Flos  
**Middle left:** the XYLUX XY-EXIT emergency fitting  
**Middle right:** the AiKU from Alteme  
**Bottom left:** Zen Quattro from Castaldi  
**Bottom right:** Martini's Shop Line